

Palomino Townhome

3 Bedrooms 2.5 Baths 2-Car Garage Unfinished Basement 1,376 Square Feet



ROWHOUSE TOWNHOMES

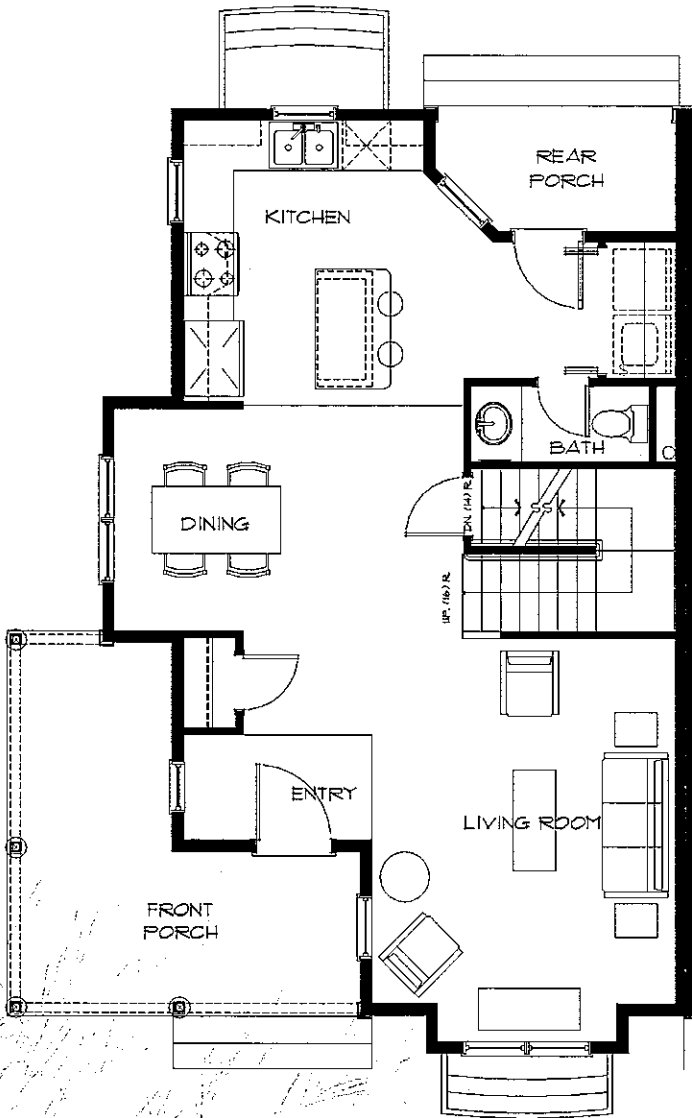
The charming Rowhouses are two-story townhomes featuring 2- and 3-bedroom layouts with unfinished bonus basement space and standard 2-car garages. The Rowhouses range from approximately 1,170 to 1,376 square feet. There are three floor plans to choose from: Shetland, Appaloosa and Palomino.

ASW REALTY PARTNERS RESERVES THE RIGHT TO ALTER ALL PRELIMINARY FLOORPLANS, SPECIFICATIONS, FEATURES, PRICES AND OTHER INFORMATION DESCRIBED IN THE SALES MATERIAL WITHOUT NOTICE OR OBLIGATION. ALL HOME SIZES ARE APPROXIMATE AND MAY VARY DEPENDING UPON THE ELEVATION. THIS DRAWING IS AN ARTIST CONCEPTION ONLY AND DETAILS ARE SUBJECT TO CHANGE.

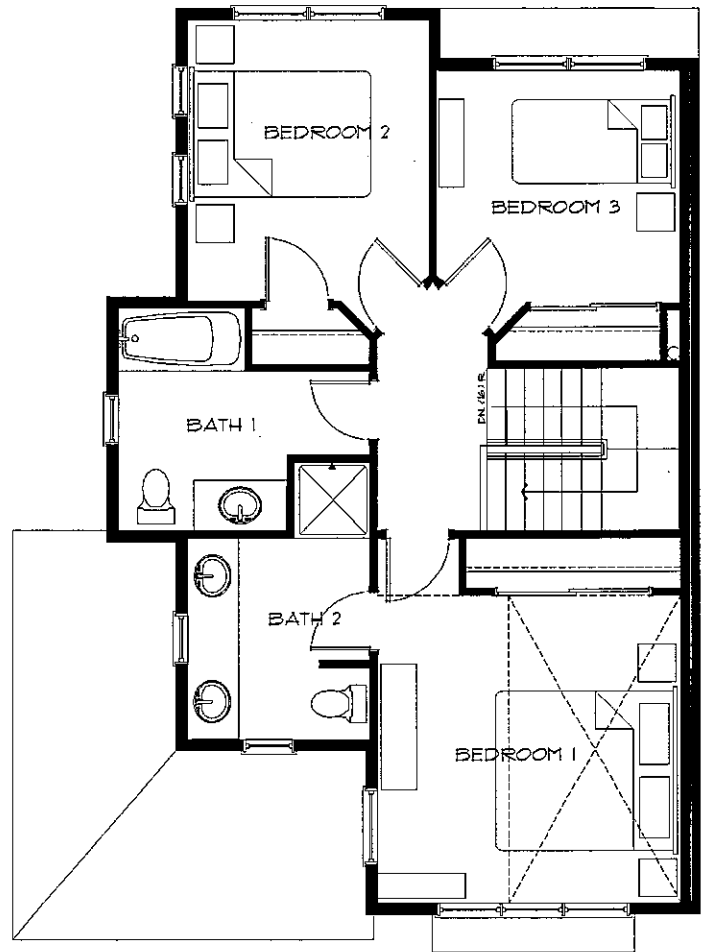


Palomino Townhome

3 Bedrooms 2.5 Baths 2-Car Garage Unfinished Basement 1,376 Square Feet



GROUND LEVEL



UPPER LEVEL